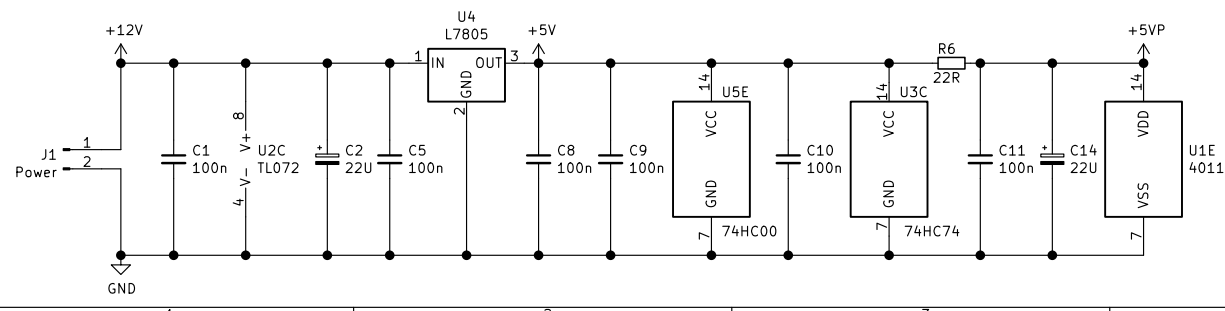
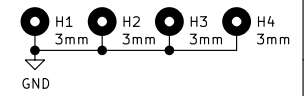



ASSUME VCO IS LOCKED WHEN:
 Voltage from pin 6 of phase-frequency detector (after LPF) is near 5 Volt rail.
 — AND —
 Voltage from pin 9 of phase-frequency detector (after LPF) is near zero.





MEES

M. Konstapel
meezenest.nl/mees
 Sheet: /
 File: phase_detector.sch

Title: Transmitter - PLL

Size: A4	Date: 2020-11-27
KiCad E.D.A. kicad 5.1.2-5.1.2	Rev: 2
Id: 1/1	